

Transport and Heavy Vehicles



EDAM CAD Services,
Royal Leamington Spa. Warwickshire. United Kingdom.
Whatsapp: +44(0) 759 879 2910

Transport and Heavy Vehicles



EDAM CAD SERVICES our aim is to become a preferred supplier for transport sector manufacturers in the United Kingdom providing solutions for vehicles, project management, and to facilitate the work of our clients throughout product life cycle.

We are fully aware that this is a highly competitive sector, but are confident in our skill and experience in design and structural calculation, and in the definition and integration of systems, testing, production line support, and supply chain management.



INDUSTRY 4.0, the future of processes transformed by digital technology, innovation, and improvements in production, efficiency and manufacture; 3D printing, digital management, virtual or augmented reality, facilitating implementation of Industry 4.0.

We provide R&D, innovation in manufacturing processes, or substantial improvements in maintenance processes in the context of vehicles, machinery, traffic control, also high-quality services for connected and autonomous vehicles.

We are looking for collaboration with universities and investors to achieve this transformation, developing these technologies, alongside our in-house applications developed for the new industry.



EDAM CAD SERVICES supply expertise and supervision for everything related to engineering support and manufacturing.

We are able to manufacture a wide range of products. We cover all activities associated with product fabrication, from definition in models or designs to finished product, including process planning, tool design, assembly support, digital production, offline balancing and simulation.

- Customer specification.
- Technical support.
- Documentation, design and customer requirement.
- Design of tools for manufacture and assembly
- Ground support team (GSE).
- Manufacturing engineering support.
- Mounting engineering support.
- Simulation of manufacturing processes.
- Technical Instructions (TIs Graphics).



EDAM CAD
Engineered Solutions

Whatsapp: +44(0) 759 879 2910 or sales@edamcadservices.com

Transport and Heavy Vehicles



PRODUCT SUPPORT ENGINEERING

Including engineering activities related to the definition and development of products.

Activities that cover R&D, design and definition of products such as automobiles, airplanes, trains, etc., including, for example, design conceptualization, engineering, and sizing details.

- Conceptual design, style and specifications
- Systems engineering
- Mechanical and electrical installations
- 2D drawing and documentation
- Harnesses and 3D installations
- Test design

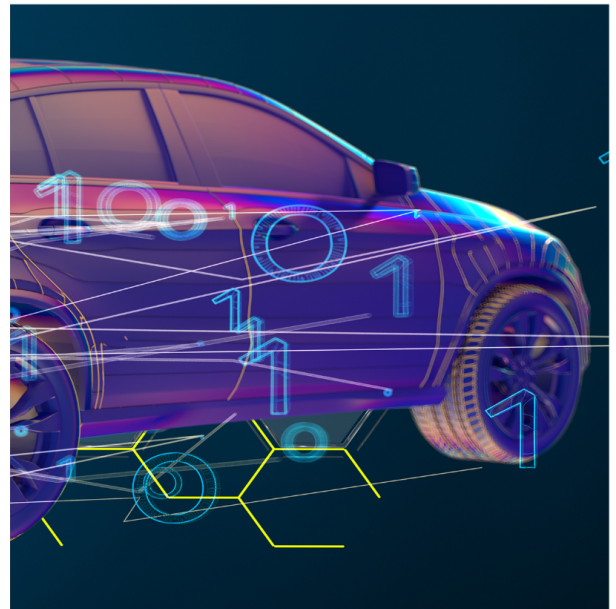
PRODUCT COMPLIANCE (stress and certification)

From the preliminary development of innovation in the conception of the product, to the precise definition of assembly drawings, we cover all your product development needs; process and product specification, basic and detailed engineering, structural calculation, definition and realization of product validation tests, and any activity necessary for rigorous product definition.

We provide advanced technological solutions for product manufacture and industrialization.

Other Services

Along with process planning, tooling design, assembly support, engineering activities, simulation, optimization and lean manufacturing, we bring a wealth of experience in production management, also in post-manufacture and after-sales support.



EDAM CAD SERVICES is concerned with promoting research and development towards carbon-free mobility through technological research, including the key areas of development and manufacture of hydrogen or nickel-cadmium fuel cells and batteries.

As the future of transport is one of the great challenges for the UK government amid increasing awareness of our environmental impact, the development of alternative low-carbon solutions is of great national (and international) importance.

EDAM CAD SERVICES is committed to helping UK industry stay ahead in a rapidly developing sector..

Transport and Heavy Vehicles



Company Values and Code of Ethics

a) Honesty:

Understood as a fundamental moral value to establish internal interpersonal relationships with the members of the organization based on trust, sincerity, and mutual respect.

b) Trust:

Understood as the security in the realization of our commitment to our clients, taken on with seriousness and responsibility.

c) Respect:

Understood as the indispensable value that makes it possible to establish a relationship of trust with our clients as an indispensable condition for effective communication and results.

d) Service Attitude:

We work every day to satisfy the needs of our clients, to meet these requirements in terms of time, cost, and quality.

e) Teamwork:

We work for a shared goal and help each other to achieve it together.

f) Project management:

We have interdisciplinary teams in various business areas with experience to ensure the successful development of a multitude of projects.

Our Structure

We are constantly adding skillful personnel with knowledge and experience to develop specific high demand projects in the industrial, commercial, and institutional sectors.

We currently cover electrical engineering, finite elements for stress calculation and certification, as well as mechanical engineering.

Our Team

Trouble coping with the current workload?

Let EDAM offer our teams of engineers, experts trained to work both remotely and in-house.

Ask for a consultation now to assess our services.

Corporate Training Services

EDAM can also support your corporate training we offer the following customised courses:

CAD / CAM

Electrical

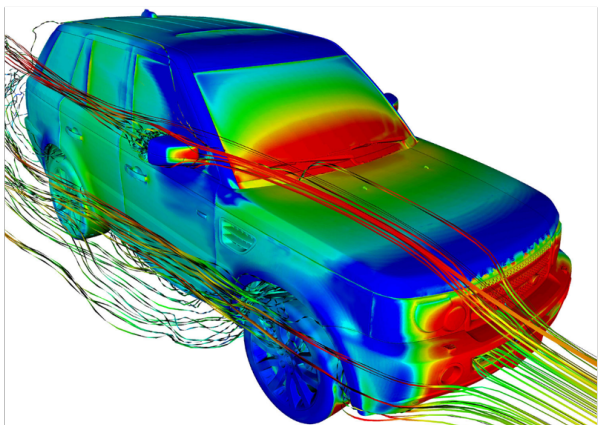
Mechanical

Maintenance

Stress



Many years of experience in the aerospace industry,, working on various Airbus projects.



Automotive expertise gained on Land Rover and other vehicle manufacturer projects.



Vital work on Spain's national High Speed Rail network.



EDAM CAD
Engineered Solutions

Whatsapp:+44(0) 759 879 2910 or sales@edamcadservices.com

Transport and Heavy Vehicles



EDAM CAD SERVICES has agreements to provide and supervise everything related to electrical engineering and manufacturing support.

This includes all the activities associated with the manufacture of the product, from its definition in models or designs, until it leaves the assembly line: process planning, tool design, assembly support, digital production, offline balancing and simulation.

We are able to manufacture a wide range of products and components with our associates..

We are currently looking for joint-venture partners in the development of earth-friendly transport systems for example; new generation batteries and energy cells, among other sources of propulsion, with the aim of achieving zero carbon emissions.

As the future of industrial processes go through transformation to digital technology, and models of investigation and efficiency improve in both production and manufacturing with innovations like 3D printing, Industry 4.0, digital management, virtual or augmented reality and 3D printing among the other areas of development. Our aim is to provide R + D and innovation in manufacturing processes and/or substantial improvements in maintenance procedures,

These are some of the challenges facing all branches of the industry; vehicles, machinery, traffic control, connected and autonomous vehicles.

With our collective experience spanning decades in these fields, Edam CAD Services can bring added value to your project, increasing efficiency and keeping down costs.

For more information interested parties should not hesitate to get in touch.

We are learning and taking the next leap with our infotainment systems for our customers



<p>Always On</p> <p>Instant start up from low power mode - Back-up battery gives 2week standby</p> <p>Instant connection using embedded SIM with profile management</p>	<p>Always Connected</p> <p>Always connected to 4G network (5G future)</p> <p>Cloud server back-end provides fully connected experience</p>	<p>Always Listening</p> <p>Full interaction through voice</p> <p>Multiple key partners for offboard voice, Alexa, Nuance, Microsoft</p>	<p>Always Up to Date</p> <p>Next generation Software over the air (SOTA)</p> <p>First to market with hardware upgradeable cartridge concept</p>

We can design intergated wiring for user interfaces, streamlining system messaging,using emerging technologies to enhance safety

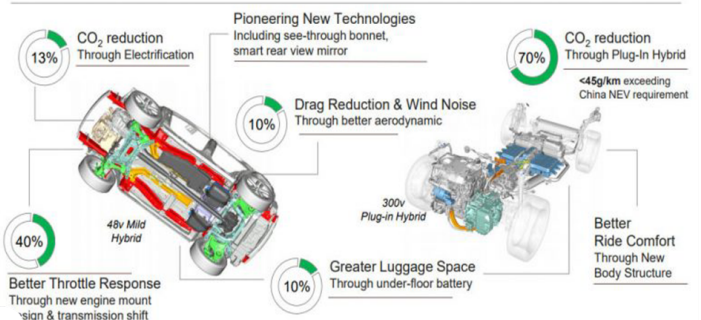


Enabling and improving delivery systems for new, green propulsion sources to encourage uptake of cleaner vehicles in a wider context



Producing reliable, durable control interfaces which can survive the toughest , most rugged conditions with minimal maintenance needs

And this year we are transforming our smaller SUVs with our brand new Premium Transverse Architecture



Able to provide architecture to deliver new technology at big scale

Transport and Heavy Vehicles

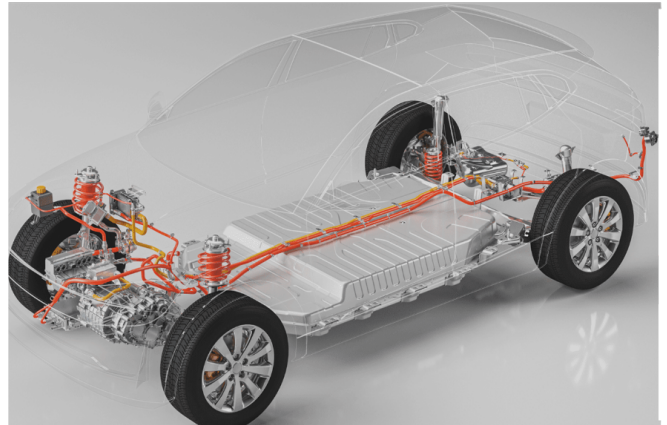


Our young, energetic, highly skilled teams have carried out important, high profile work on various projects with several important companies including Airbus, Land Rover, Talgo, Caterpillar and many other iconic organizations.



Modern sustainable low-emission public transport, intra-urban and long distance projects

Edam CAD Services bring a positive can-do attitude and strong perfectionist work ethic, adding value through our enthusiastic and flexible multifunctional teams, from consulting to construction and beyond, also we are able, through our associates, to produce components as needed.



Design and development of electrical wiring systems for the latest automotive projects

We are interested in developing our environmentally responsible, sustainable business model in conjunction with other forward-looking companies.

To discover how we can help your project do not hesitate to contact us through our website:

www.edamcadservices.com or
by email: **sales@edamcadservices.com**
or by Whatsapp: **+44(0) 795 879 2910**



Working with Military and Civil aviation precision projects

We look forward to hearing from you